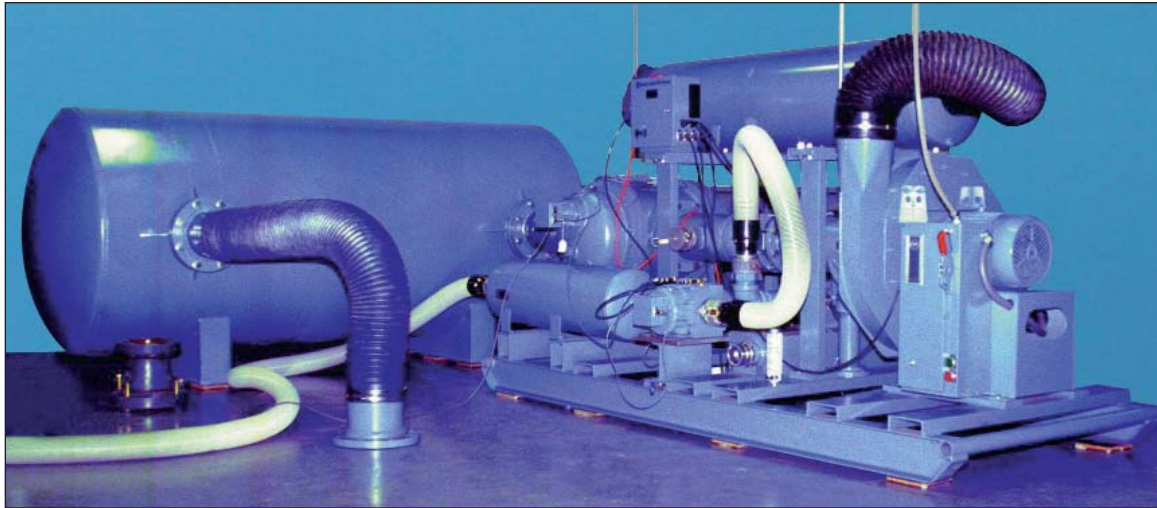


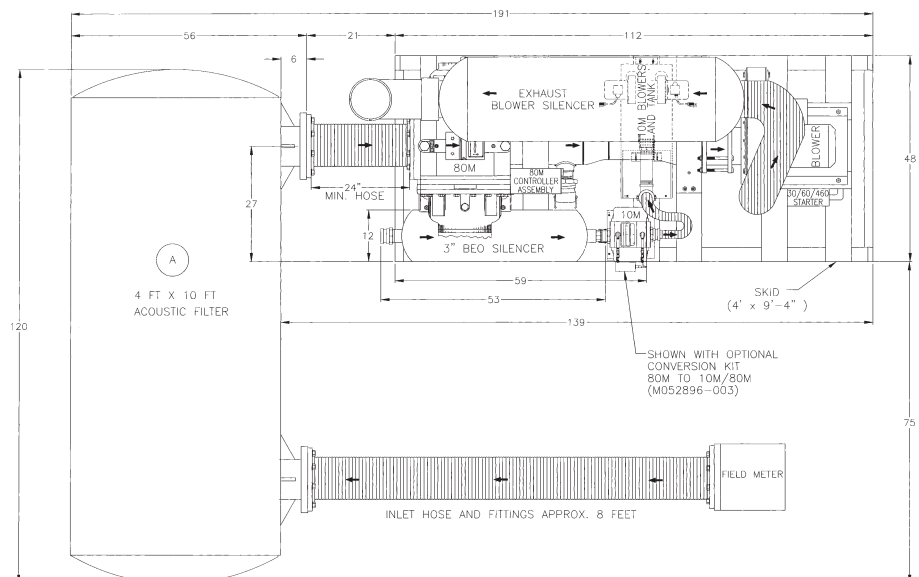
ROOTS® Proving System

Model 5 10M/80M



ROOTS® Model 5 10M/80M Proving System

- The Model 5 10M/80M transfer prover is an integrated, computer controlled system for large capacity gas meter verification and testing at flow rates from 100 CFH to 80,000 CFH (2265 m³/h).
- The prover system consists of a Master Meter(s) for the flow measurement, a Controller for flow rate and transducer interface, and aWindows®-based Computer Software Package for controlling the test, calculating proof and accuracy, and formulating reports for presentation of test data.
- A laptop or personal computer (not provided) is needed to run the prover software. The computer can be provided at an additional cost.
- The dimensional drawing on the right is provided to facilitate space planning for the 10M/80M Proving System. For example, the "A" dimension is the silencer length of 10 feet (305cm).



ROOTS® Proving System Model 5 10M/80M

Specifications

(excludes computer)

Accuracy:		+/- 0.55%
Repeatability:		+/- 0.15%
Ambient Operating Temperature:	Master Meter:	+32° to +140°F 0° to +60°C
	Controller, etc.:	-4° to +140°F -20° to +60°C
Ambient Operating Temperature:	Master Meter:	-40° to +140°F -40° to +60°C
	Controller, etc.:	-40° to +185°F -40° to +85°C
Humidity:		Up to 95% non-condensing
AC Power:	10M Blower:	120 or 240 volts ± 15%, 48 to 62 hertz
	80M Blower (10hp fan)	230 volts ± 10%, 50 or 60 hertz, 3-phase 460 volts ± 10%, 50 or 60 hertz, 3-phase
	Electronics:	120 or 240 volts ± 15%, 48 to 62 hertz
Blower Capacity:	10M Dual:	0 to 14,400 ACFH at 10 inch differential 0 to 400 m ³ /h at 25 millibar differential
	80M:	0 to 80,000 ACFH at 20 inch differential 0 to 2265 m ³ /h at 50 millibar differential
Compliance:		Meets FCC Part-15 requirements NMI and NIST Traceable
Test Medium:		Air
Test Flow Rate:	10M Master Meter:	100 to 10,000 ACFH 2.83 to 283 m ³ /h
	80M Master Meter:	1600 to 80,000 ACFH 45 to 2265 m ³ /h
Safety Rating:		Complies with Underwriters Laboratory Requirements Contact factory for alternate power source requirements

Minimum Computer System Requirements:

- Microsoft Windows® (100% IBM Compatible) - version 95 or greater
- Pentium 400Mhz processor with 128 Megabytes of RAM
- CD drive
- 1 RS-232 serial port or USB port
- 256 color video with 800 x 600 capability
- 100 MB of free Hard Disk space

Roots Meters & Instruments

Dresser, Inc.

16240 Port Northwest Drive
Houston, Texas 77041-2645 USA
Inside US Ph: 800.521.1114 Fax: 800.335.5224
Outside US Ph: 832.590.2303 Fax: 832.590.2494



www.dresser.com